

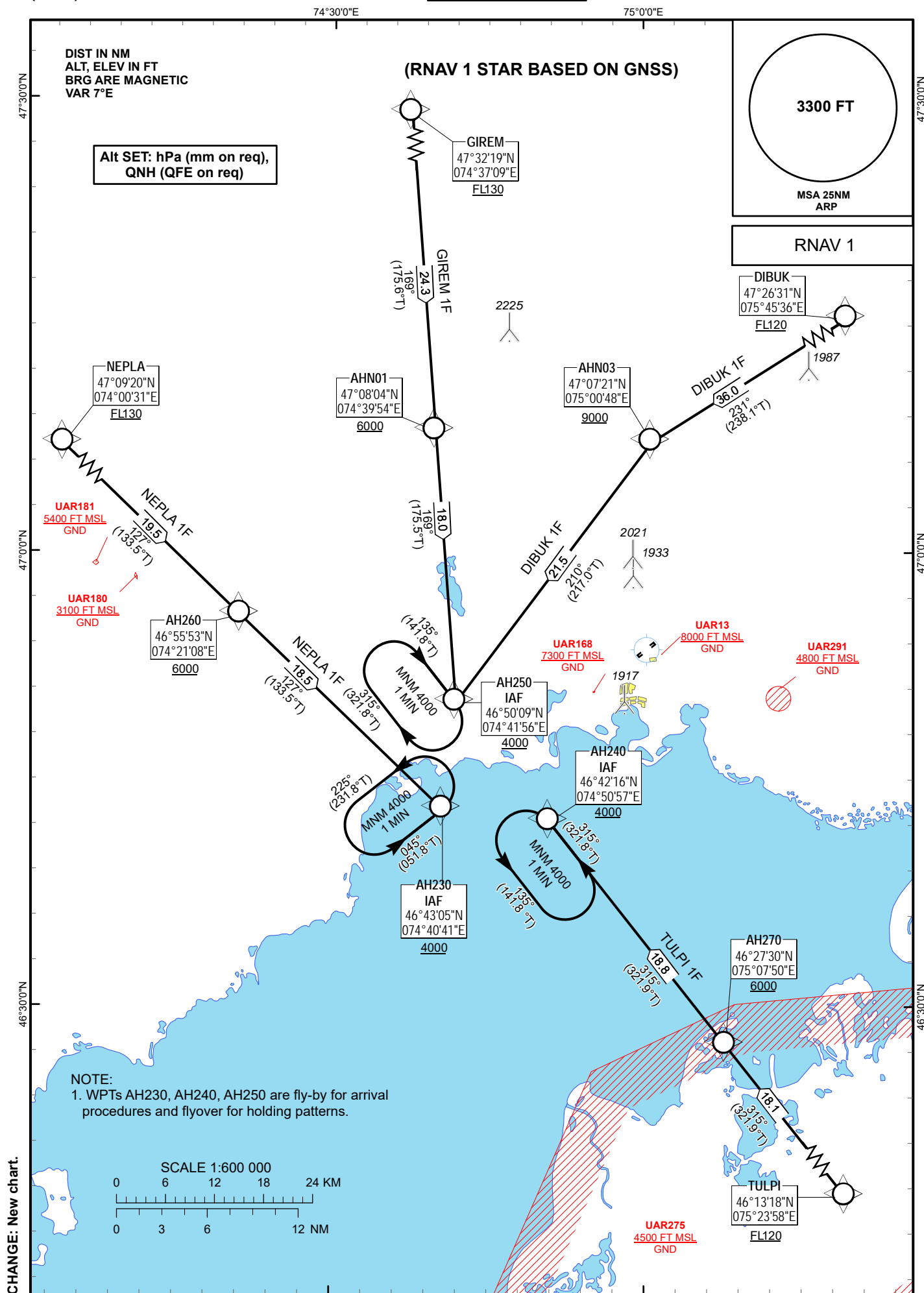
STANDARD ARRIVAL
CHART - INSTRUMENT
(STAR) - ICAO

TRANSITION ALTITUDE
10000 FT

BALKASH TOWER 128.0
BALKASH ATIS (EN) 126.6
BALKASH ATIS (RU) 126.2

DIBUK 1F, GIREM 1F,
NEPLA 1F, TULPI 1F

BALKHASH
RWY 04



TABULAR DESCRIPTION

DIBUK 1F RWY04											
Serial Number	Path Descriptor	Waypoint Identifier	Fly - over	Course M°(T°)	Magnetic Variation(°)	Distance (NM)	Turn Direction	Altitude (FT)	Speed (KT)	VPA (°)	Navigation Specification
010	IF	DIBUK	-	-	+7.1	-	-	+FL120	-	-	RNAV 1
020	TF	AHN03	-	231(238.1)	+7.1	36.0	-	+9000	-	-0.8	RNAV 1
030	TF	AH250	-	210(217.0)	+7.1	21.5	L	+4000	-	-2.2	RNAV 1

GIREM 1F RWY04											
Serial Number	Path Descriptor	Waypoint Identifier	Fly - over	Course M°(T°)	Magnetic Variation(°)	Distance (NM)	Turn Direction	Altitude (FT)	Speed (KT)	VPA (°)	Navigation Specification
010	IF	GIREM	-	-	+7.1	-	-	+FL130	-	-	RNAV 1
020	TF	AHN01	-	169(175.6)	+7.1	24.3	-	+6000	-	-2.7	RNAV 1
030	TF	AH250	-	169(175.5)	+7.1	18.0	-	+4000	-	-1	RNAV 1

NEPLA 1F RWY04											
Serial Number	Path Descriptor	Waypoint Identifier	Fly - over	Course M°(T°)	Magnetic Variation(°)	Distance (NM)	Turn Direction	Altitude (FT)	Speed (KT)	VPA (°)	Navigation Specification
010	IF	NEPLA	-	-	+7.1	-	-	+FL130	-	-	RNAV 1
020	TF	AH260	-	127(133.5)	+7.1	19.5	-	+6000	-	-3.4	RNAV 1
030	TF	AH230	-	127(133.5)	+7.1	18.5	-	+4000	-	-1	RNAV 1

TULPI 1F RWY04											
Serial Number	Path Descriptor	Waypoint Identifier	Fly - over	Course M°(T°)	Magnetic Variation(°)	Distance (NM)	Turn Direction	Altitude (FT)	Speed (KT)	VPA (°)	Navigation Specification
010	IF	TULPI	-	-	+7.1	-	-	+FL120	-	-	RNAV 1
020	TF	AH270	-	315(321.9)	+7.1	18.1	-	+6000	-	-3.1	RNAV 1
030	TF	AH240	-	315(321.9)	+7.1	18.8	-	+4000	-	-1	RNAV 1

WAYPOINT COORDINATES

Waypoint Identifier	Coordinates	
AH230	464305.00N	0744041.00E
AH240	464216.00N	0745057.00E
AH250	465009.00N	0744156.00E
AH260	465553.00N	0742108.00E
AH270	462730.00N	0750750.00E
AHN01	470804.00N	0743954.00E
AHN03	470721.00N	0750048.00E
DIBUK	472631.00N	0754536.00E
GIREM	473219.00N	0743709.00E
NEPLA	470920.00N	0740031.00E
TULPI	461318.00N	0752358.00E